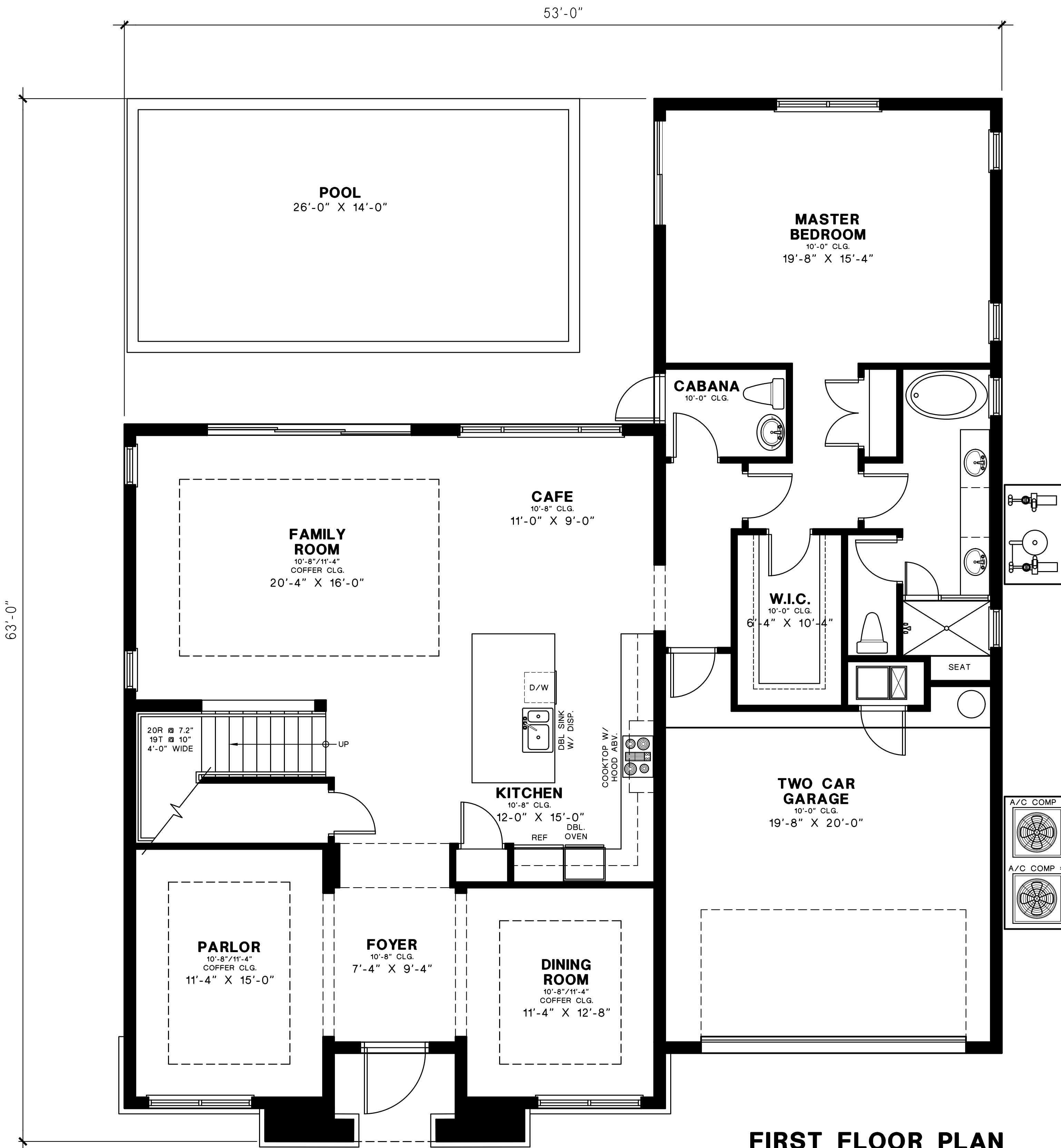


**NORKITA MODEL**



**FIRST FLOOR PLAN**

**AREA CALCULATIONS:**

FIRST FLOOR A/C AREA:	2,071 SQ. FT.
SECOND FLOOR A/C AREA:	1,285 SQ. FT.
TOTAL A/C LIVING AREA:	3,356 SQ. FT.
GARAGE:	440 SQ. FT.
COVERED ENTRY:	56 SQ. FT.
TOTAL:	3,852 SQ. FT.



NO.	REVISIONS

ALL DIMENSIONS, ROOM ARRANGEMENTS, AND PLANS INDICATED OR REPRESENTED BY THIS DRAWING ARE OWNED BY AND THE PROPERTY OF THE OFFICE AND ARE NOT TO BE REPRODUCED, COPIED, OR USED IN CONNECTION WITH ANY OTHER PROJECT WITHOUT THE WRITTEN PERMISSION OF MAURICE MENASCHE, P.A.

MAURICE MENASCHE, P.A. IS AN EQUAL OPPORTUNITY EMPLOYER. MINOR DIMENSIONS AND CONDITIONS ON THE JOB. THE OFFICE MUST BE NOTIFIED OF ANY VARIATION BEFORE THE COMMENCEMENT OF CONSTRUCTION. NO CHANGES WILL BE ACCEPTED.

**NORKITA MODEL**  
FOUR BEDROOMS / 4 1/2 BATHS  
THE OAKS  
DAVIE, FLORIDA

TO THE BEST OF MY KNOWLEDGE, THE DESIGN DEPICTED IN THIS DRAWING COMPLETES WITH THE APPLICABLE MINIMUM BUILDING CODES IN EFFECT AS OF DATE OF CERTIFICATION BELOW.

Maurice Menasche, AIA, LEED AP  
FL REG. #ARD014891

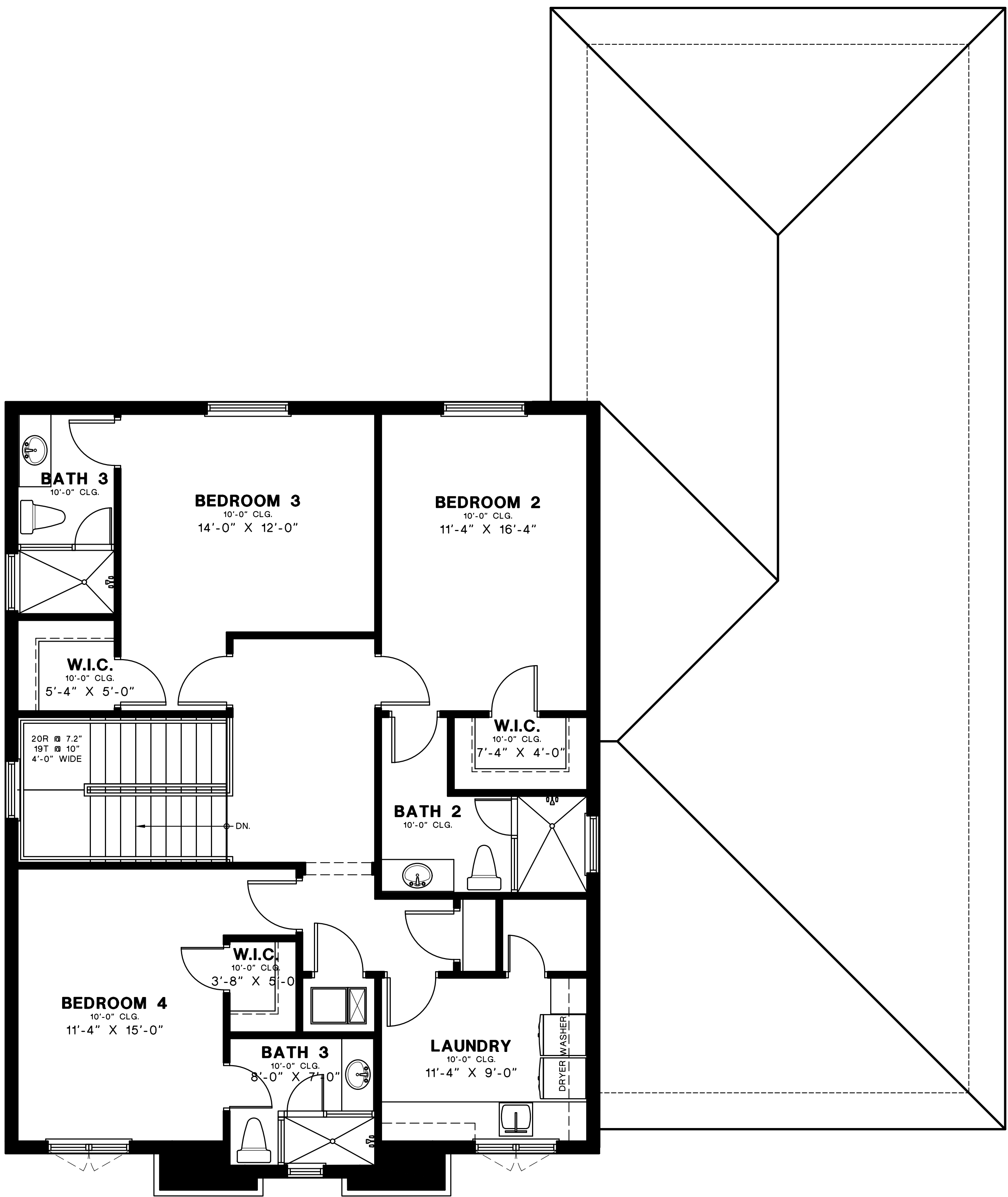
SHEET TITLE	1ST FLOOR PLAN
DRAWN	MM
CHECKED	MM
DATE	8/14/20
SCALE	1/4" = 1'-0"
JOB. NO.	191220
SHEET	A-1
OF	4 SHEETS

REVISIONS	

ALL DIMENSIONS, ROOMS, ARRANGEMENTS, AND PLANS INDICATED OR REPRESENTED BY THIS DRAWING ARE OWNED BY AND THE PROPERTY OF THE OFFICE AND ARE NOT TO BE REPRODUCED OR COPIED FOR ANY OTHER PROJECT WITHOUT THE WRITTEN PERMISSION OF MAURICE MENASCHE, P.A.

NO PART OF THIS DRAWING SHALL BE REPRODUCED OR TRANSMITTED IN ANY FORM OR BY ANY MEANS, ELECTRONIC OR MECHANICAL, INCLUDING PHOTOCOPYING, RECORDING, OR BY ANY INFORMATION STORAGE AND RETRIEVAL SYSTEM, WITHOUT THE WRITTEN PERMISSION OF MAURICE MENASCHE, P.A.

NO PART OF THIS DRAWING SHALL BE REPRODUCED OR TRANSMITTED IN ANY FORM OR BY ANY MEANS, ELECTRONIC OR MECHANICAL, INCLUDING PHOTOCOPYING, RECORDING, OR BY ANY INFORMATION STORAGE AND RETRIEVAL SYSTEM, WITHOUT THE WRITTEN PERMISSION OF MAURICE MENASCHE, P.A.



**SECOND FLOOR PLAN**

**NORKITA MODEL**  
 FOUR BEDROOMS / 4 1/2 BATHS  
 THE OAKS  
 DAVIE, FLORIDA

TO THE BEST OF MY KNOWLEDGE, THE DESIGN DEPICTED ON THIS DRAWING COMPLIES WITH THE APPLICABLE MINIMUM BUILDING CODES IN EFFECT AS OF DATE OF CERTIFICATION BELOW.

Maurice Menasche, AIA, LEED AP  
 FL REG. #ARD014891

SHEET TITLE	2ND FLOOR PLAN
DRAWN	MM
CHECKED	MM
DATE	8/14/20
SCALE	1/4" = 1'-0"
JOB. NO.	191220
SHEET	A-2
OF	4 SHEETS



Maurice Menasche, P.A.  
 Architecture • Planning • Design  
 FL REG. #ARD014881  
 12555 Orange Drive, Suite 122  
 Davie, Florida 33330  
 Ph: (954) 474-8540 Fax: (954) 474-8550  
 www.MenascheArchitecture.com

NO.	REVISIONS

ALL DIMENSIONS, FINISHES, MATERIALS, AND PLANS INDICATED OR REPRESENTED BY THIS DRAWING ARE OWNED BY AND THE PROPERTY OF THE OFFICE AND ARE NOT TO BE REPRODUCED, COPIED, REPRODUCED, OR USED IN CONNECTION WITH ANY OTHER PROJECT OR FOR ANY OTHER PURPOSE WITHOUT THE WRITTEN PERMISSION OF MAURICE MENASCHE, P.A.

REVISIONS OR CHANGES TO THESE DRAWINGS SHALL BE MADE BY THE ARCHITECT AND THE CONTRACTOR SHALL VERIFY AND BE RESPONSIBLE FOR ALL DIMENSIONS AND CONDITIONS ON THE JOB. THE OFFICE SHALL BE NOTIFIED OF ANY VARIATION BEFORE THE COMMENCEMENT OF CONSTRUCTION. THESE DRAWINGS ARE FOR CONSTRUCTION PURPOSES ONLY. NO OTHER USES WILL BE ACCEPTED.

**NORKITA MODEL**  
 FOUR BEDROOMS / 4 1/2 BATHS  
 THE OAKS  
 DAVIE, FLORIDA

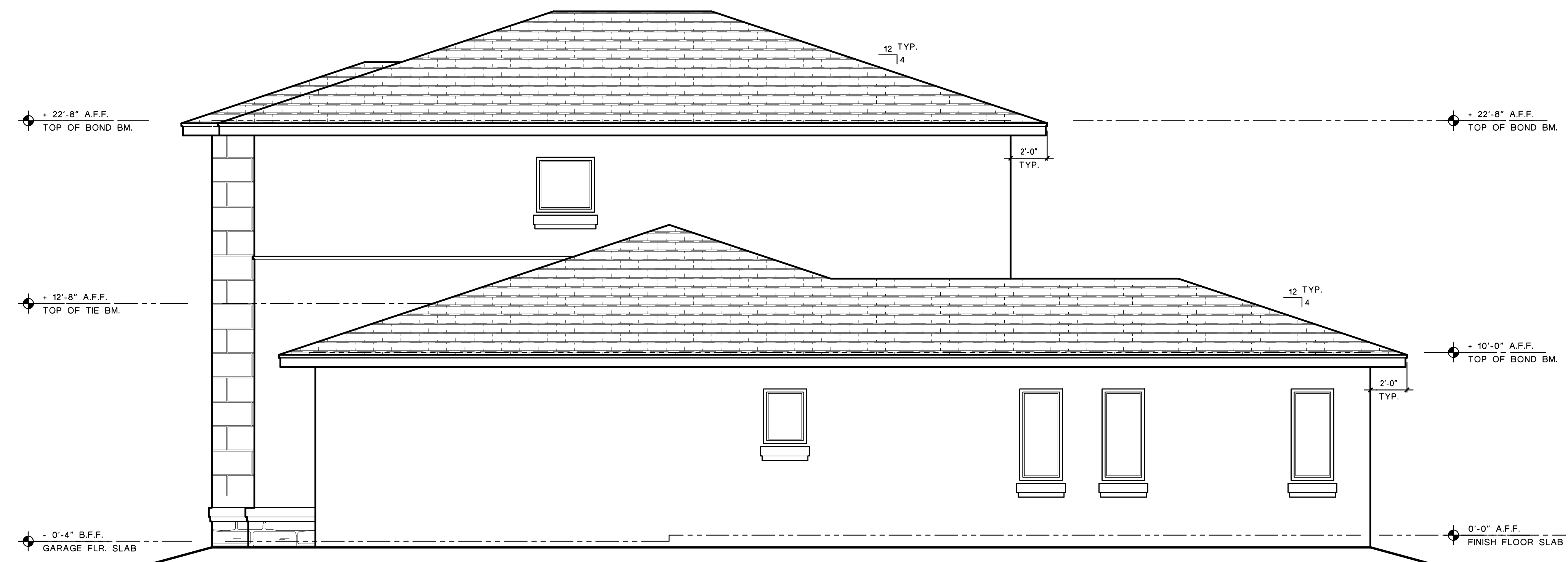
TO THE BEST OF MY KNOWLEDGE, THE DESIGN DEPICTED ON THIS DRAWING COMPLIES WITH THE APPLICABLE MINIMUM BUILDING CODES IN EFFECT AS OF DATE OF CERTIFICATION BELOW.

Maurice Menasche, AIA, LEED AP  
 FL REG. #ARD014881

SHEET TITLE	ELEVATIONS
DRAWN	MM
CHECKED	MM
DATE	8/14/20
SCALE	1/4" = 1'-0"
JOB. NO.	191220
SHEET	



**FRONT ELEVATION**



**RIGHT ELEVATION**

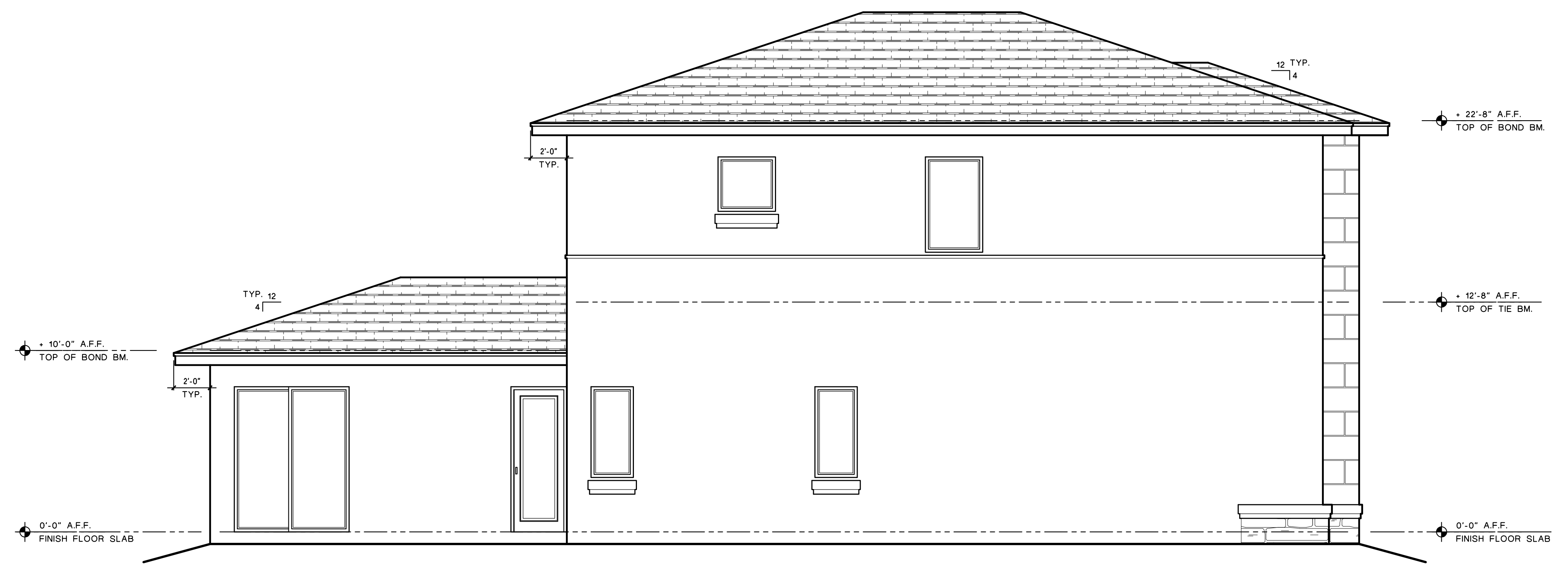
**Maurice Menasche, P.A.**  
 Architecture • Planning • Design  
 FL REG. #ARD014891  
 12555 Orange Drive, Suite 122  
 Davie, Florida 33330  
 Ph: (954) 474-8540 Fax: (954) 474-8550  
 www.MenascheArchitecture.com

NO.	REVISIONS

ALL DIMENSIONS, FINISHES, MATERIALS, AND PLANS INDICATED OR REPRESENTED BY THIS DRAWING ARE OWNED BY AND THE PROPERTY OF THE OFFICE AND ARE NOT TO BE REPRODUCED OR COPIED FOR ANY OTHER PROJECT WITHOUT THE WRITTEN PERMISSION OF MAURICE MENASCHE, P.A. ANY REVISIONS TO THESE DRAWINGS SHALL BE MADE BY THE ARCHITECT AND SHALL BE INDICATED BY A REVISION NUMBER AND DATE. THE CONTRACTOR SHALL VERIFY AND BE RESPONSIBLE FOR ALL DIMENSIONS AND CONDITIONS ON THE JOB. THE OFFICE SHALL BE NOTIFIED OF ANY VARIATION BEFORE THE COMMENCEMENT OF CONSTRUCTION. THESE DRAWINGS ARE FOR CONSTRUCTION PURPOSES ONLY. NO OTHER USES SHALL BE ACCEPTED.



**REAR ELEVATION**



**LEFT ELEVATION**

**NORKITA MODEL**  
 FOUR BEDROOMS / 4 1/2 BATHS  
 THE OAKS  
 DAVIE, FLORIDA

TO THE BEST OF MY KNOWLEDGE, THE DESIGN DEPICTED ON THIS DRAWING COMPLIES WITH THE APPLICABLE MINIMUM BUILDING CODES IN EFFECT AS OF DATE OF CERTIFICATION BELOW.

Maurice Menasche, AIA, LEED AP  
 FL REG. #ARD014891

SHEET TITLE	ELEVATIONS
DRAWN	MM
CHECKED	MM
DATE	8/14/20
SCALE	1/4" = 1'-0"
JOB. NO.	191220
SHEET	